

Google Earth for Genealogy



October 15, 2016

Heritage Hunters of Saratoga County

<http://www.saratoganygenweb.com/gwsarhh.html>

Dennis A. Hogan, <http://www.dennisAhogan.com>

© 2009 GeoBasis-DE/BKG
US Dept of State Geographer
© 2015 Google
Data SIO, NOAA, U.S. Navy, NGA, GEBCO

Google earth

This Complete Presentation is available online

At www.dennisAhogan.com, click on
Lectures and Handouts tab

- *Google Earth for Genealogy*
- Select a handout and save on your computer
- Then you can click on links to try out websites

Resources

- Mapping with Google course,
<https://mapping.withgoogle.com/>
- Google Earth for Genealogy Volume I & II (DVD) by Lisa Louise Cook
- Cook, Lisa Louise *The Genealogist's Google Toolbox, 2nd Edition*. San Ramon, CA:Genealogy Gems Publications, 2015.

Google Earth

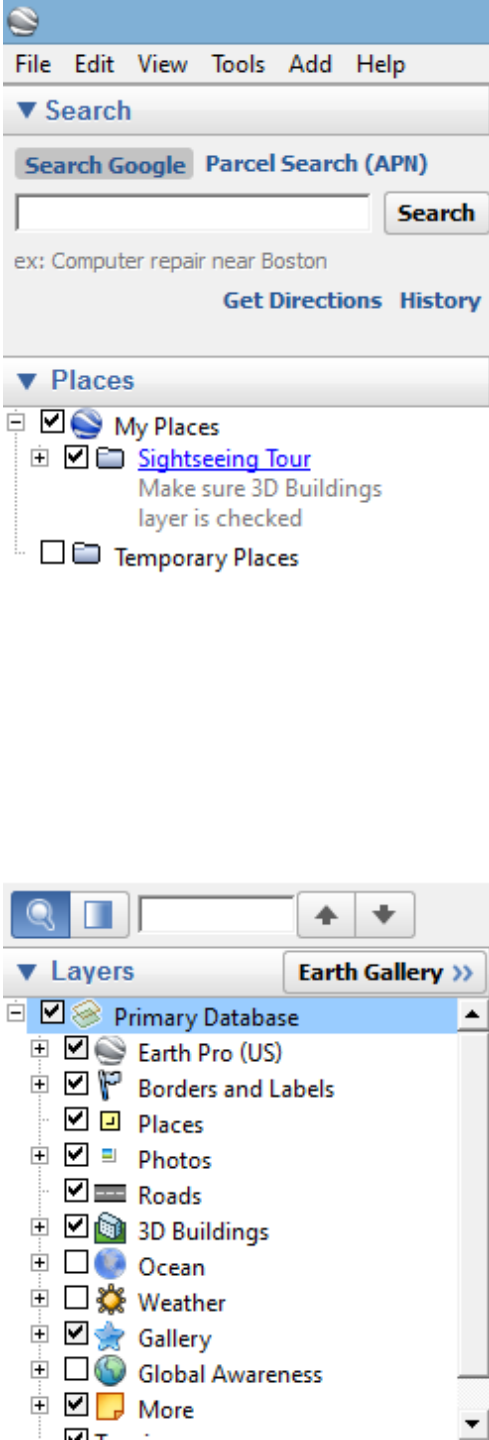
- Overlay historic maps- DavidRumsey.com, oldmapsonline.org, [Newberry Library county maps](http://NewberryLibrarycounty.com), or maps you have scanned.
- Create a tour which can include photos, documents, and videos.
- Plot property boundaries
- Plot migration patterns
- Examine the topography of ancestral areas.
- "Visit" ancestral homes, churches, communities via streetview

Google Earth

- Google Earth must be downloaded & installed on your computer
 - Windows, Mac, or Linux
- Using Google Earth requires an internet connection
 - Can be used offline on a limited basis, see <https://support.google.com/earth/answer/21423?hl=en>

Google Earth

- There are 2 versions of Google Earth
 - Google Earth (free download)
 - Google Earth Pro (formerly \$399, currently free download)
 - Pro enhancements over Earth include more layers, better measurement tools, HD Movie Maker, higher resolution printing, better spreadsheet handling
 - Both versions can be downloaded from <https://www.google.com/earth/explore/products/desktop.html>
 - Pro requires a license key - you can use GEPFREE
 - Enter your email address & license key & click **Login**
 - I am using the Pro version



Google Earth - Overview

The left sidebar includes:

- A group of pull-down menus offering File, Edit, View, Tools, Add, and Help
- **Search Panel** - Google Earth will "fly in" to the location that you enter
- **Places Panel** - save & organize placemarks in folders for linking to locations that you want to revisit. Checked places will appear on the map.
- **Layers Panel** - provided by Google & partners. Checked layers will appear on the map. Selected layers are viewable only at certain "altitudes," so zoom in and out to display. Also Earth Gallery for sample views

Google Earth - Navigation

On the right there are 2 "compasses," a street view "pegman," and a slider

- The larger compass is to "Look around" - you stay stationary while viewing the surroundings (click and drag the outside ring)
- The smaller compass is to "Move around" (click on the arrows)
- The street view "pegman" only displays if the view includes streets. Drag the "pegman" onto the map to display streets (in blue) for which street view is available.
- The slider allows you to zoom in & out



Google Earth - Toolbar



Hide or Unhide Sidebar



Add Placemark



Add Polygon (shape)



Add Path (lines & routes)



Add Image overlay



Record a Tour



Show time slider to move between acquisition dates



Show sunlight across the landscape (slider)



Switch between Earth, Sky, and other planets



Show ruler



Email



Print

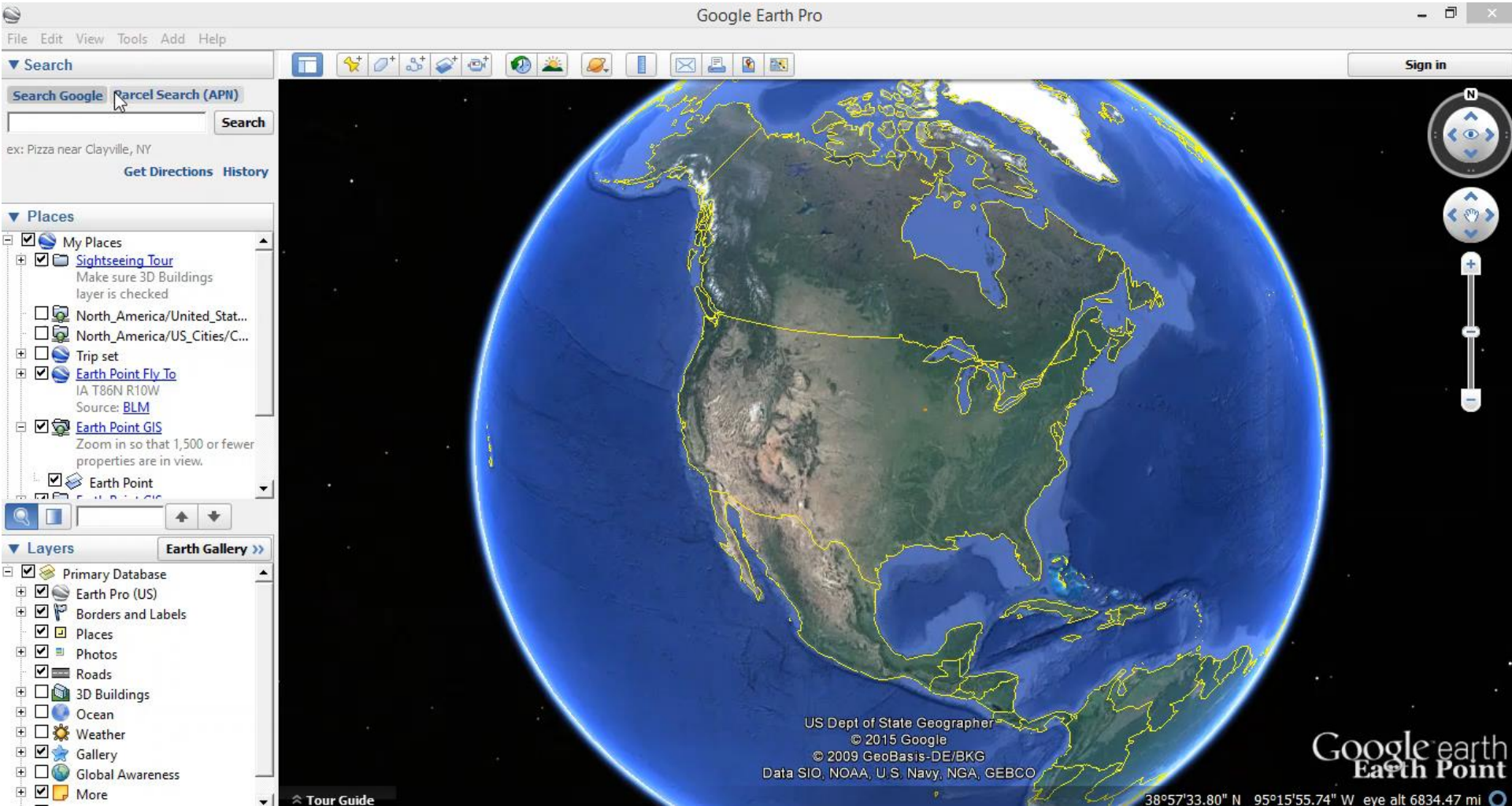


Save Image



View in Google Maps

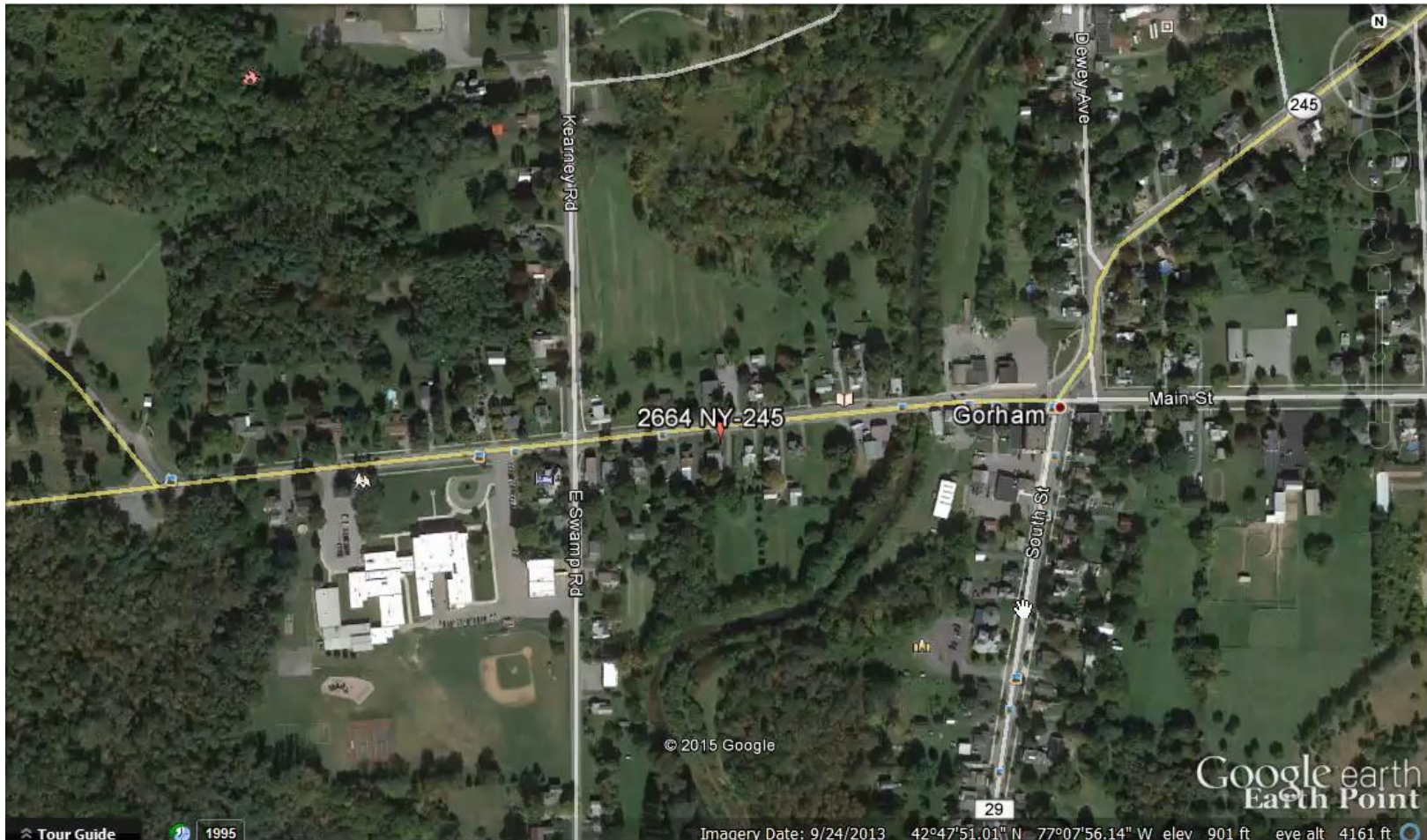
Google Earth



Map Overlays - Rumsey

- Go to the Layers panel
- Under "Gallery" select "Rumsey Historic Maps"
- Rumsey icons will appear on the Google Earth map if historic maps are available in the area you are looking at
- Click the Rumsey icon on the map to open the dialogue box
- Click the map thumbnail in the pop up box to add the map to Google Earth
- The historic map will appear in the Places panel and can be moved to any folder you wish.

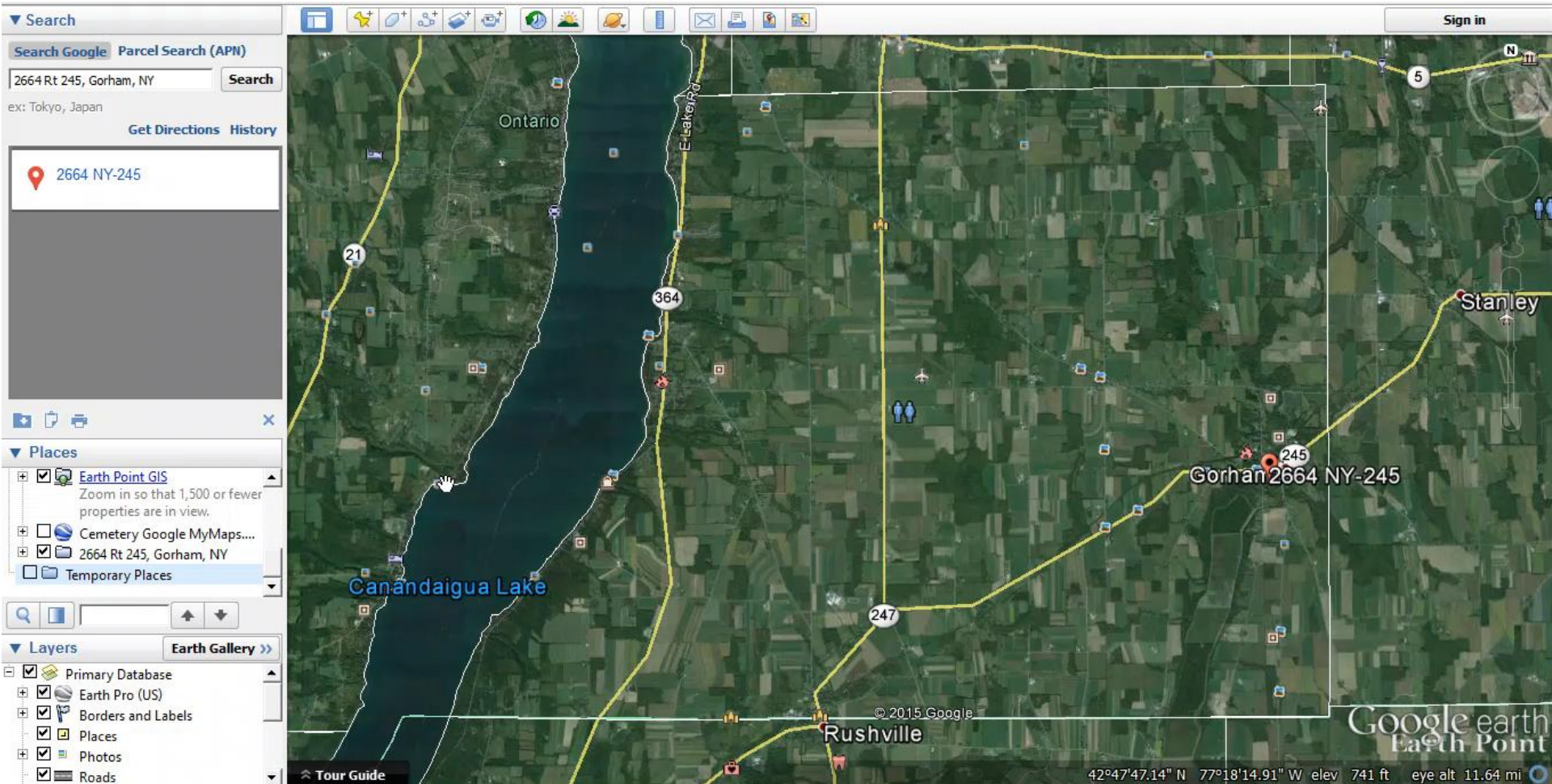
Map Overlays - Rumsey



Map Overlays - Rumsey & Others

- Rumsey Historic Maps - <http://www.davidrumsey.com/>
- The Rumsey site has thousands of maps (many more than available through the Rumsey layer in Google Earth).
- Search the Rumsey site (or other sites such as the [Library of Congress](#)) for historic maps which interest you & save the image to your computer.
- Digital maps from any source can be overlaid in Google Earth.
- Click on the **Add Image Overlay** icon on the tool bar to overlay an image.
- Drag the green "anchors" to adjust the historic map to the Google Earth map.

Map Overlays - Rumsey & Others



Google Earth - Plotting Land

- Hatcher, Patricia Law, *Locating Your Roots Discover Your Ancestors Using Land Records*. Cincinnati: Betterway Books, 2003.
- Hively, Neal Otto. *How to Plot Land Surveys*. 2000. (metes-and-bounds)
- <http://www.rockfordmap.com/Submitted-Content/ImageGallery/Facts%20About%20Land%20Descriptions.pdf>

Google Earth - Plotting Land

➤ State-Land States

- 20 states including the original 13: CT, DE, GA, HI, KY, ME, MD, MA, NH, NJ, NY, NC, PA, RI, SC, TN, TX, VT, VA and WV.
- Metes-and-Bounds System
 - Plat Plotter (free) <http://platplotter.appspot.com>
 - Deed Platter (free) <http://www.genealogytools.net>
 - Metes and Bounds (free) <http://tabberer.com/sandyknoll/more/metesandbounds/metes.html>
 - DeedMapper (\$) www.directlinesoftware.com

➤ Public-Land States

- 30 states, primarily western
- Rectangular-Survey/Township-Range System
 - BLM/Earthpoint (free) see the Public-Land slides
 - DeedMapper (\$) www.directlinesoftware.com
 - HistoryGeo (\$) www.historygeo.com

State-Land (1)

- State-Land States use the metes-and-bounds system
- Deeds or surveys will provide the info you need to plot a property.
 - FamilySearch has [New York, Land Records, 1630-1975](#) (images not indexed). Clicking brings up a list of counties. Selecting a county displays all of the files available with year ranges. Selecting a file allows you to browse the images.
 - A starting point will be given. A latitude & longitude must be determined if not given.
 - A direction and distance will be given to define the next point.
 - Subsequent directions/distances should connect back with the starting point.

State-Land (2)

➤ Here's an example from [Plat Plotter](#) which is a free tool.

➤ The starting point is 39.00, -78.90

1. Copy survey data into the data entry area.

Data needs to follow the following format:

- **S** or **N**
- **Degrees** (0.0-90)
- (optional: minutes 0-59)
- (optional: seconds 0-59)
- **E** or **W**
- **Distance** (feet or poles/rods/perch)

S	13	45	W	1452
S	51		W	891
S	60	30	W	1927.2
S	45		W	1755.6
S	28	30	W	1353
S	23		W	2006.4
N	70		W	5940
N	39	45	E	4075.5
S	45		E	250.8
N	36	15	E	330
N	36	15	E	3844.5
S	80		E	6022.5

State-Land (3)

- Plat Plotter can export a KML file which can be imported into Google Earth



Public-Land (1)

- Land was transferred from the government to the original settlers via bounty land for military duty prior to the Civil War and Homestead Acts.
- The Bureau of Land Management (BLM) has records for transfer of property from the federal government to individuals (about 2 million land patents from 1820 to 1908).

Public-Land (2)

- Do a Land Patent Search at the Bureau of Land Management (BLM) Web Site:
<http://www.glorerecords.blm.gov>

U.S. DEPARTMENT OF THE INTERIOR
BUREAU OF LAND MANAGEMENT
General Land Office Records

Search Documents | Reference Center | Support | Shopping Cart

Search Documents

Search Documents By Type | Search Documents By Location | Search Documents By Identifier

Patents | Surveys | LSR | CDI

Location

State: IOWA
County: Any County

Names

Last Name: Smith
First Name:
Middle Name:

search patentees search warrantees

To search for land patents:

1. Start by selecting the State.
2. **You do not have to fill in all fields**, but provide *at least* one additional field.
3. Click the **Search Patents** button.

Search Tips:








- Hover your mouse over a field to get a brief description.
- Get detailed information by checking the [Glossary](#) in the Reference Center.
- For more tips and help, check out our [Patent Search Overview](#).

Public-Land (3)

- The BML provides the Land Patent Legal Description which consists of State, Meridian, Township, Range, Aliquots (subset), Section - shown in the **red box** below

1 2 3 4 5 6 100 Next

Note: Your list may be incomplete due to an administrative limit of 2000 results. For suggestions on refining your search, [click here](#).

Image	Accession	Names ↑	Date	Doc #	State	Meridian	Twp - Rng	Aliquots	Sec. #	County
	MW-0586-301	 ABNER, ELISHA,  SMITH, PRISCILLA,  SMITH, HENRY T	3/1/1855	8229	IA	5th PM	086N - 010W	NE¼SE¼	32	Benton
	MW-0063-366	 ABORN, DORCAS W,  SMITH. RFN1AMTN	4/1/1857	13223	IA	5th PM	089N - 018W	NE¼NE¼	26	Grundy

Public-Land (4)

- Enter the Land Patent Legal Description into the Earthpoint website's "Township and Range - Search By Description" Tool

<http://earthpoint.us/TownshipsSearchByDescription.aspx>

Township and Range - Search By Description.

A user account is **not** needed for the features on this web page.

Enter Township and Range. Optionally enter Section. Google Earth flies you there using BLM data. Hint: pause for a moment after choosing each of the criteria. This allows the data to be loaded into the drop-down boxes.

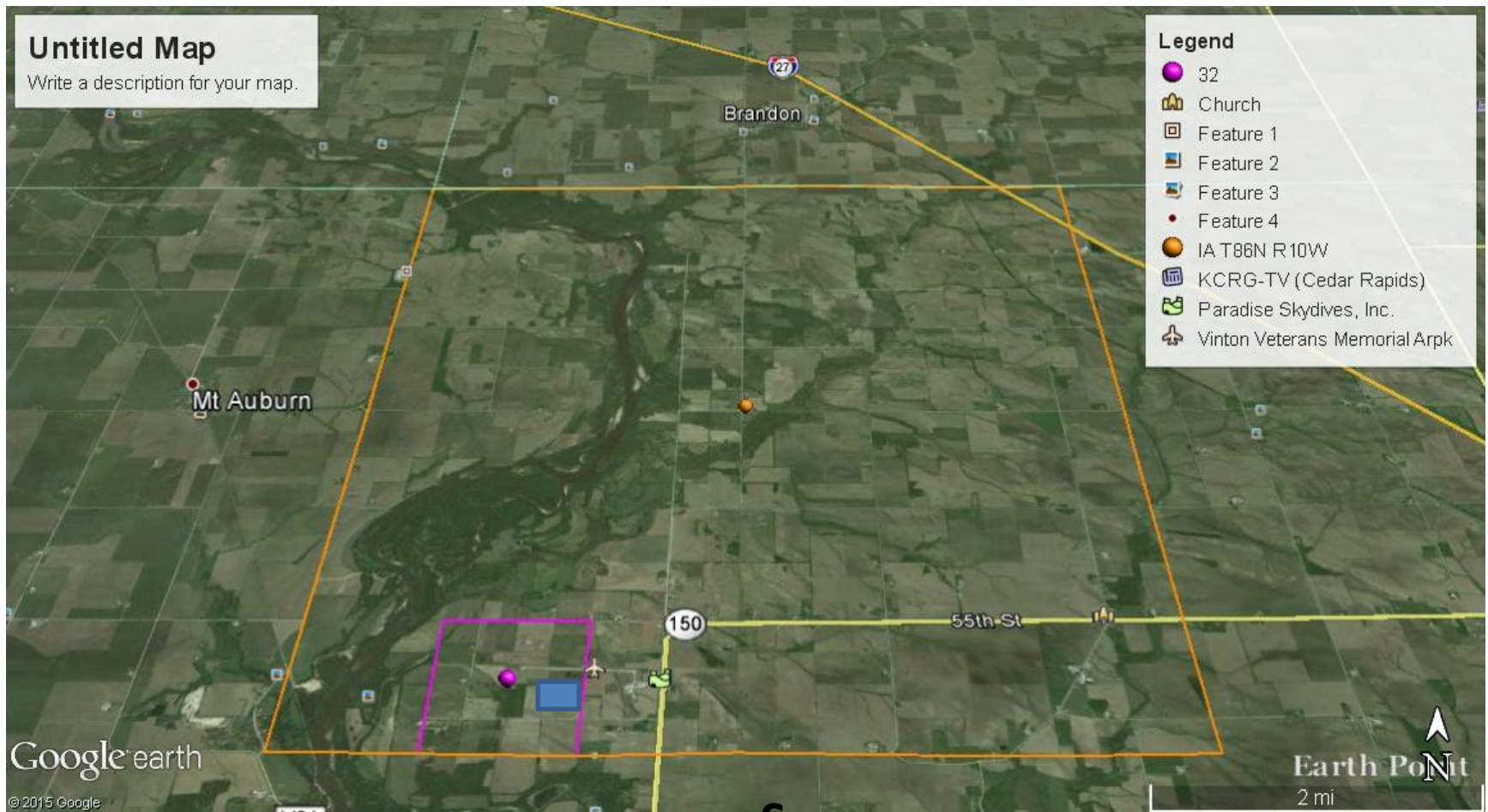
State	Iowa	▼
Principal Meridian	Fifth	▼
Township	086 N	▼
Range	010 W	▼
Section	032	▼

Free. User account is not needed.

If you want to see the surrounding townships, then once you have clicked the "Fly To" button, come back and click the BLM or National Atlas "View on Google Earth" button. Free. User account is not needed.

Public-Land (5)

- Clicking on *Fly To Google Earth* invokes Google Earth
- The **blue box** is the NE quarter of the SE quarter of Section 32 (**purple box**) [BLM Aliquot: NE1/4SE1/4]




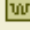





Public-Land (6)

- The BML provides useful supporting documents:
 - Click on the icon in the *Image* column to display the warrant document which conveys the property.
 - Click on the link in the *Accession* column to display the plat image.

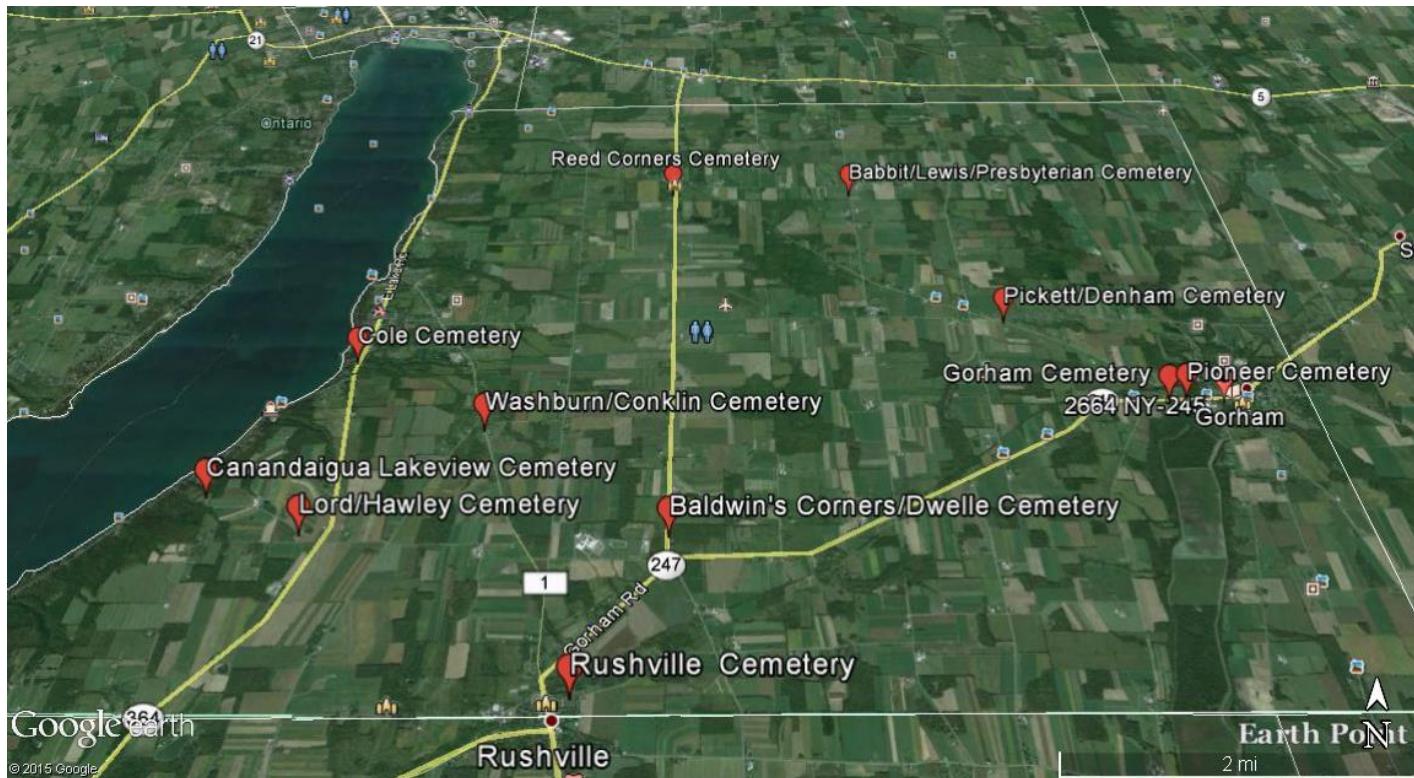
1 2 3 4 5 6 100 Next

Note: Your list may be incomplete due to an administrative limit of 2000 results. For suggestions on refining your search, [click here](#).

<u>Image</u>	<u>Accession</u>	<u>Names</u> ↑	<u>Date</u>	<u>Doc #</u>	<u>State</u>	<u>Meridian</u>	<u>Twp - Rng</u>	<u>Aliquots</u>	<u>Sec. #</u>	<u>County</u>
	MW-0586-301	 ABNER, ELISHA,  SMITH, PRISCILLA,  SMITH, HENRY T	3/1/1855	8229	IA	5th PM	086N - 010W	NE¼SE¼	32	Benton
	MW-0063-366	 ABORN, DORCAS W,  SMITH. BENJAMIN	4/1/1857	13223	IA	5th PM	089N - 018W	NE¼NE¼	26	Grundy

Google Earth - Spreadsheet(1)

- Exported a KML file in Google My Maps for the cemeteries of the Town of Gorham.
- Saved the file on my computer (or open directly in Earth).
- Imported that KML file into Google Earth via the File menu\Import...



Google Earth - Spreadsheet(2)

- For great info on using spreadsheets with Google Earth see <http://earthpoint.us/ExcelToKml.aspx>

Earth Point Tools for Google Earth [Sign In / Buy Subscription](#) [Contact](#)

Excel To KML - Display Excel files on Google Earth.

A user account is recommended for the features on this web page. 

Import a spreadsheet of lat/long coordinates to Google Earth. Pop-up balloons, icons, and paths are easily created from the spreadsheet data.

Latitude and Longitude are all that is needed to create a basic display on Google Earth. Add a Name, Description, and an [Icon](#) for a professional presentation.

Advanced features support [GPS tracks](#), [Time Sliders](#), and [Grid Coordinates](#).

To get started, read the [Quick Start](#) instructions or download the sample data [ExcelToKmlDemo.zip](#).

NEW: AppendDataColumnsToDescription accepts a list of column names.

Select an Excel file (xls,xlsx,xlsm,xlsb,txt, or csv)

No file selected.


 Enhanced feature. [What is this?](#)

Worldwide Utilities

- Excel To Google Earth**
- Coordinate Grids
- Polygon Area
- Convert Coordinates
- Batch Convert

USA Utilities

- Township & Range
- BLM Grid
- Search By Description
- Search By Lat Long
- Alternate Grid
- Louisiana Twp & Rng
- Louisiana Orginal PLSS
- California Twp & Rng
- California Grid
- Search By Description
- Search By Lat Long



	A	B	C	D	E
1	Latitude	Longitude	Name	Description	Icon
2	43°36'34.86"N	116°12'23.30"W	BAM	Art museum	12
3	43 36 33.22	-116 12 18.40	Roses	Nice garden	111
4	43.608879028	-116.20320277	Zoo	Great visit	186

Sample points plotted onto Google Earth.

Create a Tour

Create placemarks (*Add Placemark* icon on tool bar) for locations of events in your family's history:

- Births
- Marriages
- Deaths
- Residences
- Ports
- Businesses
- Churches
- Schools
- Military battles or bases
- Others

Create a Tour

- **You can add digitized images such as:**
 - Photos including Old Postcards, Census Records, Vital Record Certificates, Diary pages
- **To Add an Image or Website Link to a Placemark:**
 - **Host the digital image online** (such as www.flickr.com)
 - Zoom to the desired location in Google Earth
 - Click the Placemark button in the toolbar
 - Name the Placemark
 - Add a description if desired
 - Click the **ADD IMAGE** button or (click **ADD LINK**)
 - Copy and paste the image URL address into the field and click **OK**

Create a Tour

- Videos are added to Placemarks with the embed code found on sites like [YouTube](#) for the individual video.
- Upload your digitized old home movies to YouTube to host the video (free) and create the embed code.
- Copy the embed code and paste it in to the Description area of the Placemark.

Create a Tour

- Prep:
 - If you will be narrating the tour (you have the option of recording with and without voice), you should create a script and make a couple test runs.
 - For best results, use a microphone or headset
 - Put your Placemarks in the Places panel in the order you want to tell the story.
 - To move a Placemark simply click on it and drag and drop it in to the correct order.
- Click **Record a Tour** icon on the Toolbar. A small recording tool will appear at the bottom of the screen.
- Click the Red button to record a silent tour or the microphone button to record a tour with voice or music.
- Click the first Placemark in the Places panel to show that location and begin speaking.
- Click the next item in the Places panel and describe and continue to tell the story.
- When you are done recording, click the red or microphone button to stop.
 - Click the SAVE button on the small recording bar to save the recording.

Create a Tour

Saving & Sharing Your Tour

- Google Earth files are saved in the KMZ file format and are readable by Google Earth and other map programs.
- Go to the My Places panel
- Right click on the Tour folder or Placemark and select "Save Place As"
- In the pop up window name the file as desired, and save it to your desktop. (Leave the file type as KMZ)
- Click OK
- The KMZ file on your computer can be attached to an email to share with others (they need Google Earth installed on their computer).

Create a Video

- Under the *Tools* menu, click on *Movie Maker*
- Click *Live mouse and keyboard navigation*
- Under *Save to...*, click on *Browse* to define name & location of the resulting file
- Click *Create Movie*
- [take desired actions]
- File created can be uploaded to Youtube or other online video host.
- These videos can be viewed by anyone - does not require Google Earth